

WOMEN PAINTING WOMEN

international juried exhibition + 5th anniversary

:: COLLECTOR PREVIEW ::



teresa oaxaca – summertime

32x46 oil



meg aiken – feathered
36x32" oil



meg aiken – maria in red
40x30" oil



echo baker – tibetan sisters
16x20 oil



echo baker – young girl from tibet
16x20 oil



jennifer balkan – wilted
36x30 oil



linda tracey brandon – whispering
16x20 oil



laurie brom – conversing
24x30 oil



linda button – ex libris
18x24 oil



elena caravela – divided 1
12x12 oil



elena caravela – divided 2
10x8 oil



mary chiamonte – day fade
18x24 oil



candice chovanec – evening star
30x24 oil



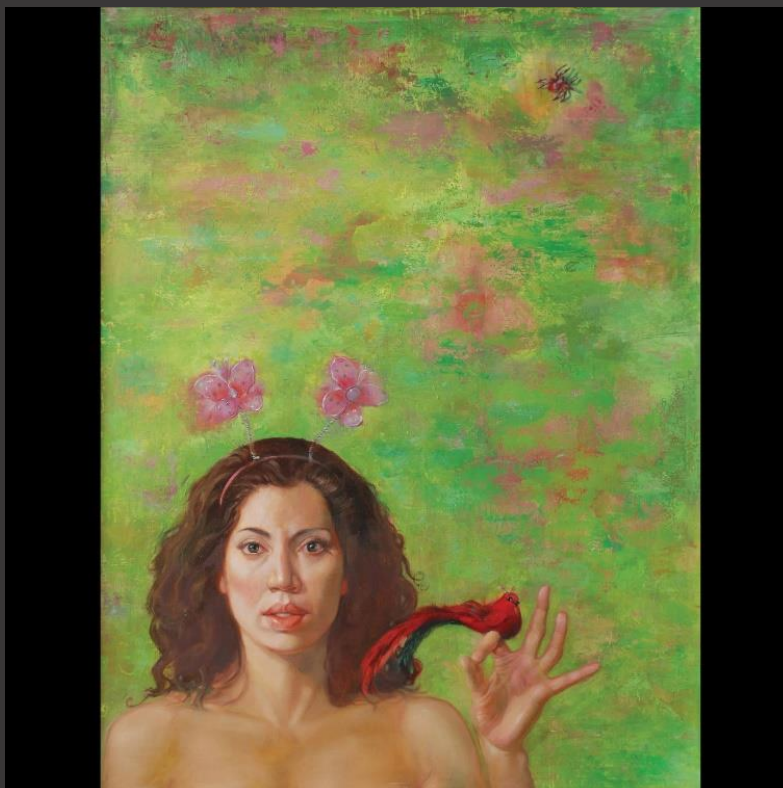
naiara castellanos – in the woods
18x24 oil



naiara castellanos – mystery girl
18x31 oil



donna colleran –contemplation
24x18 oil



janet cook – sarah + parajito
27x21 oil



angela cunningham – blue satin
26x16 oil



kamille corry – end of winter
12x10 oil



belinda del pesco – unwind
14x20 watercolor



laura den hertog – yearning
20x20 oil



stephanie deshpane – assembling the pieces
24x30 oil



stephanie deshpane – the fall
16x20 oil



julia diller – masquerade
20x16 oil



sue gilkey – reflection
18x16 oil



nanci france-vaz – soho hipster
40x28 oil



nanci france-vaz – the wish
31x19 oil



jennifer gennari – portrait of ruby
24x18 oil



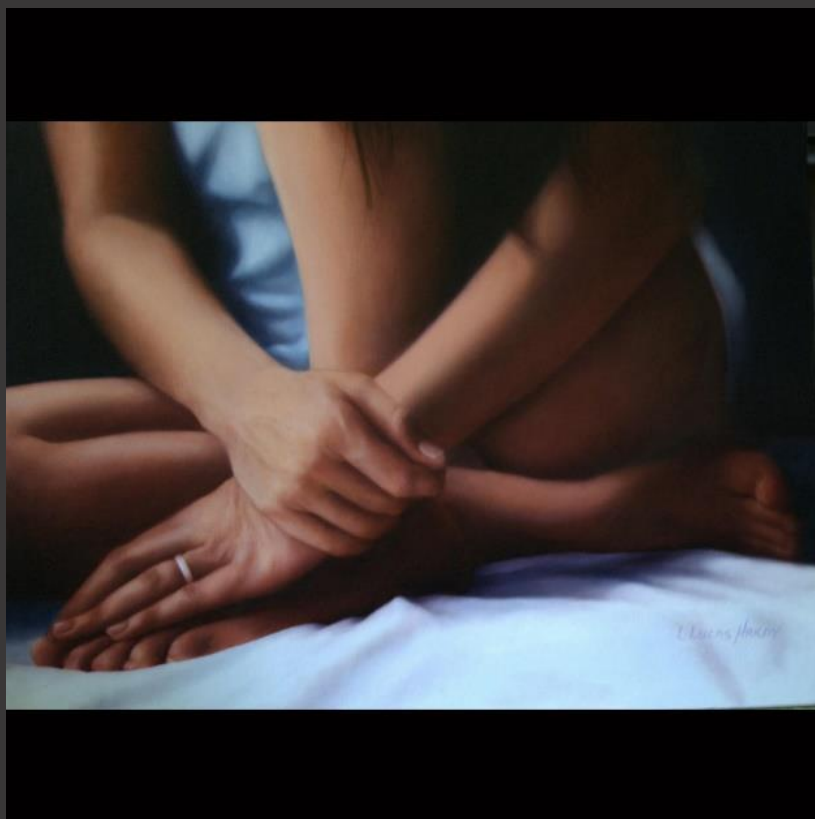
cynthia hillis mcbride – surrender
12x28 oil



jessica gordon – from the red cliffs of the mountain
40x60 oil



samantha hand – icarus' daughter, siena
24x24 oil



linda lucas hardy – beneath the thin veneer lay the heart
18x24 oil



angela hardy – secret
6x6 acrylic



nicola joy johnson – incubate
18x18 oil



nancy hollinghurst – maria
30x22 watercolor on clayboard



jenny kelley – girl arranging her hair
24x18 oil



karen kaapke – before the shower 13
12x9 oil pastel



anne-marie kornachuk – colour field
30x36 oil



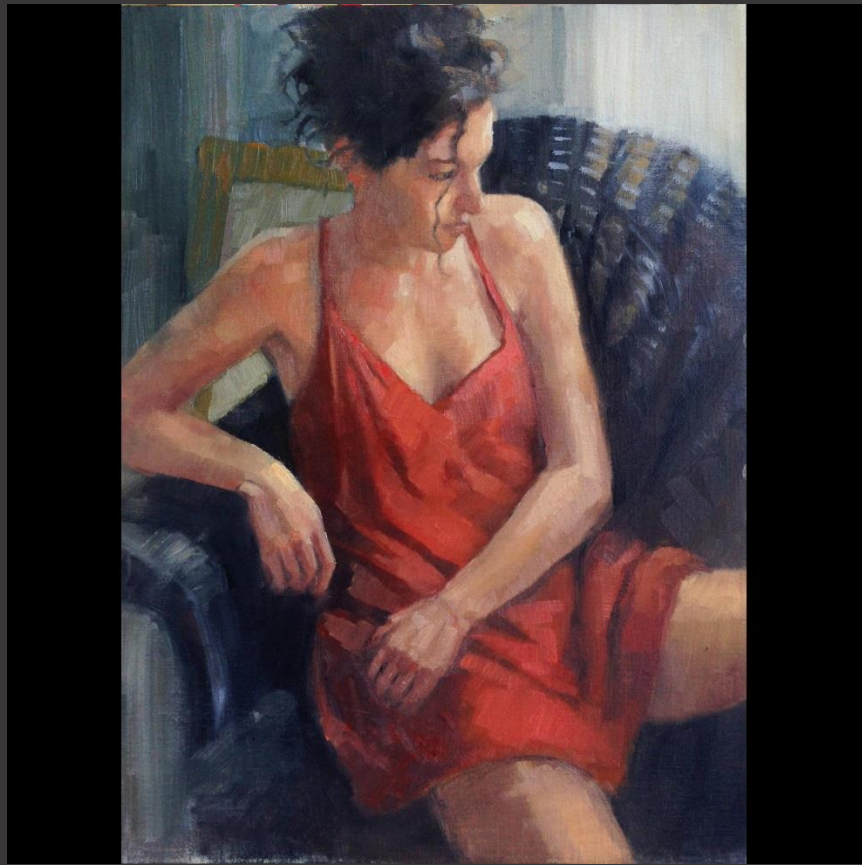
anne-marie kornachuk – weightless: bloom 2
36x36 oil



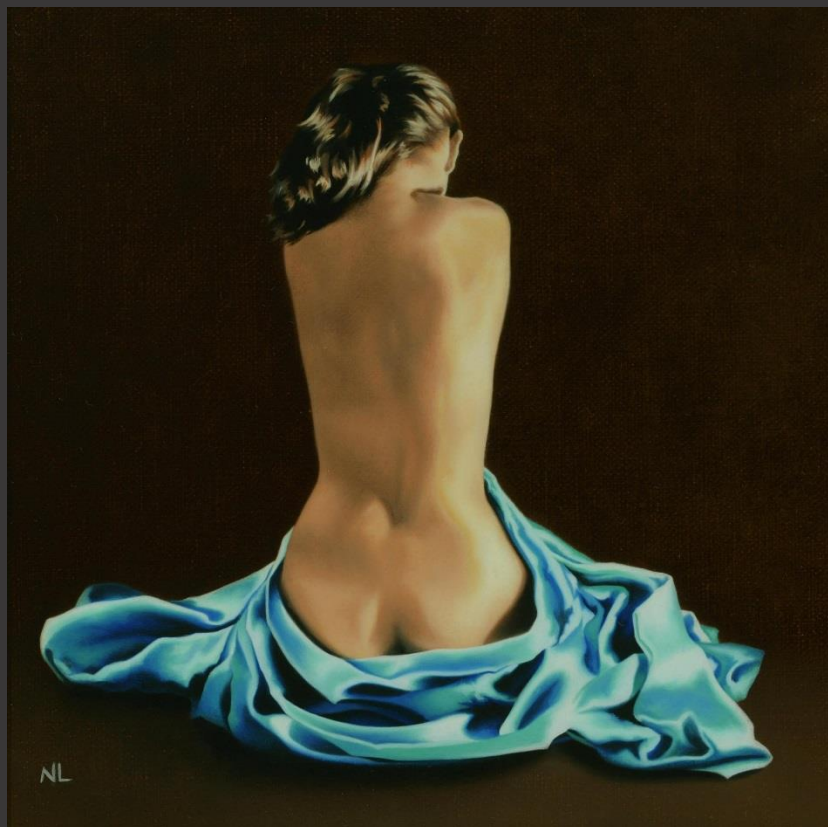
olga krimon – ania
24x24 oil



olga krimon – profile
14x11 oil



hilarie lambert – red slip
24x16 oil



nadia lazizi – borderland
8x8 oil



dana levin – forward sweep
26x22 oil



carmen mansilla – myself
13.58x11.14 oil



sydney mcginley – juggling ball
24x20 soft pastel



theresa morgan – self portrait
24x36 oil



rachel moseley – lessons in french
9x36 (triptych) oil



rachel moseley – a very fishy nip slip
10x8 oil



amelia murdock – eve's contemplation
36x24 oil



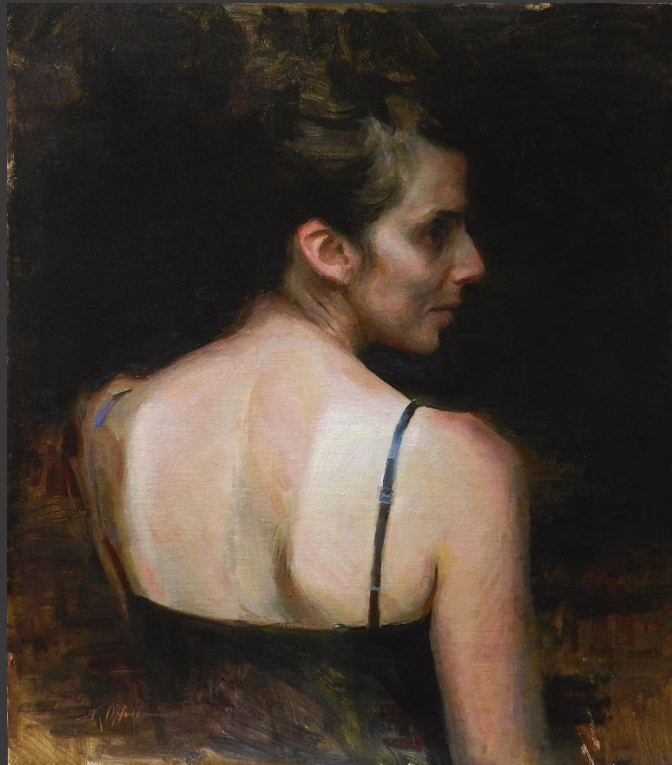
anna wypych – secret masks
31.5x39.5 oil



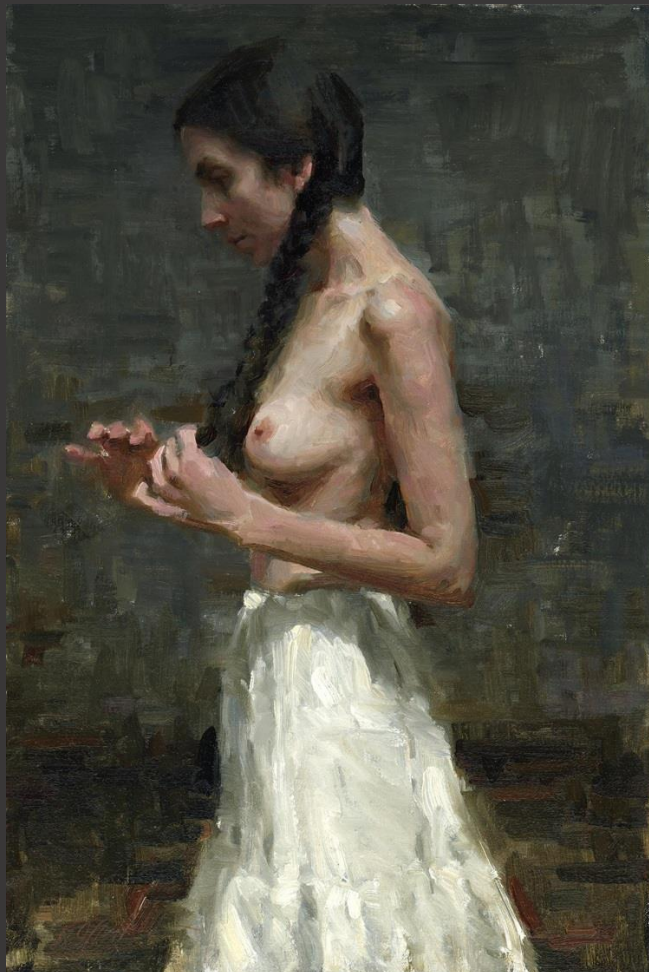
elise phillips – hold my hand
10x10 oil



leah mitchell – serenity
36x24 oil



karen offutt – a droit
20x18 oil



karen offutt – braids
18x12 oil



marci oleszkiewicz – mariah
24x18 oil



judith peck - daybreak
20x16 oil +plaster on panel



laura prichett – above
24x30 oil



laura prichett – inhale
24x18 oil



marisela quiros – la espera
30x24 oil



sara sniderhan – mama bear
18x24 oil



tiffany sage – nathalie (work in progress)
14x11 oil



tiffany sage – self portrait in red wig
14x11 oil



tina spratt – blue veil iii
28x18 oil



lauren tilden – dust bowl
24x24 oil



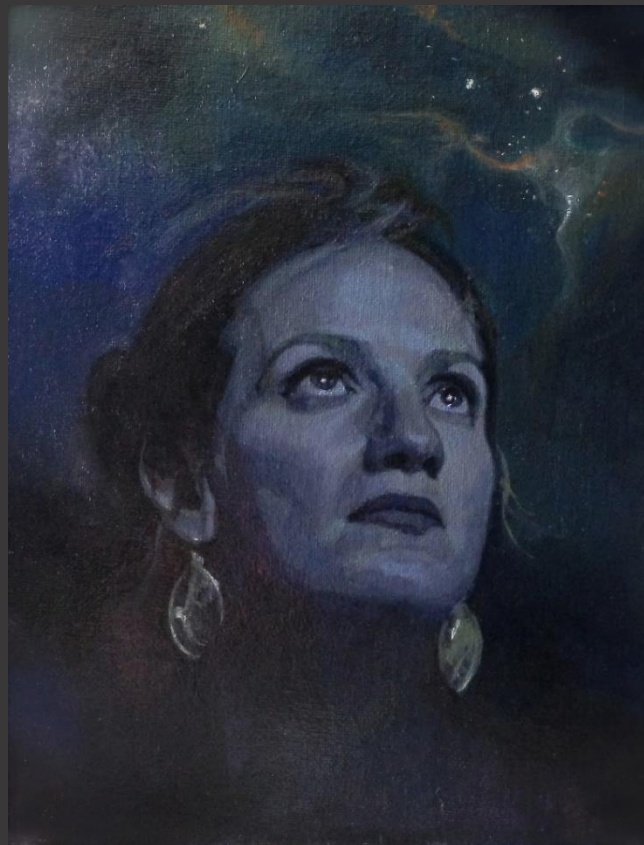
ardith staroska – persephone
30x20 oil



judy takacs – her humble opinion
30x24 oil



laura thompson – women of slow food international
36x19.5 oil



rachel constantine – nebula
10x8 oil



karen yee – cesi n'est pas une chouette (i am not an owl)
20x16 acrylic



karen yee – chinese bride
24x20 acrylic



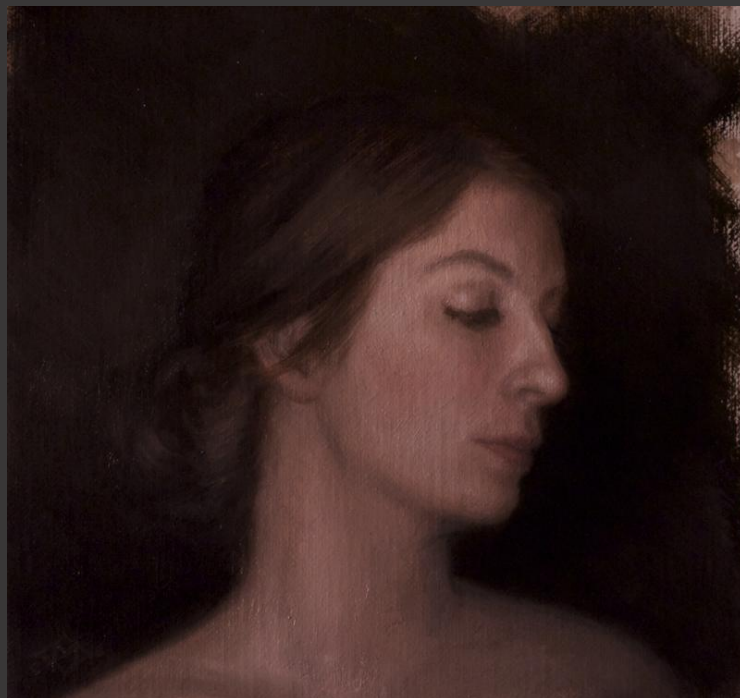
daryl zang – tossed + turned
30x36 oil



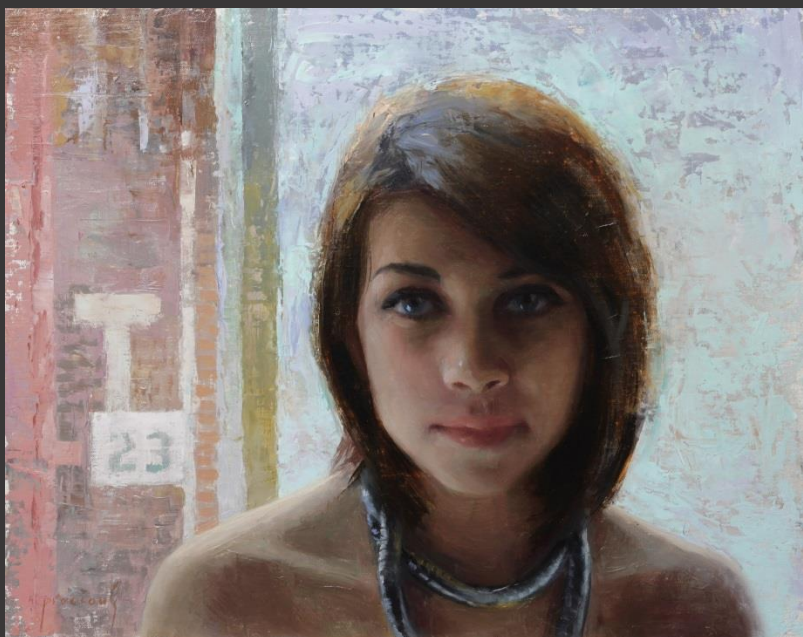
daryl zang – gratitude
24x28 oil



catherine lucas – merge
17x13 egg tempera + gold leaf on icon panel



christina grace mastrangelo – before her wedding
6x6 oil



cindy procious – t minus 23
11x14 oil



catherine prescott – Daniella
9x6 oil



alia el-bermani (WPW founder) – at the edge
12x6 oil



alia el-bermani (WPW founder) - sienna as archer
48x36 oil



linda lee nelson – rosella in lace
26x16 oil



terry strickland – gnosis
21x32 oil



felicia forte – we may be lost
24x48 oil



diane feissel (WPW founder) – sketch of nbm
10x8 oil



stephani tewes – stop all the clocks
40x40 oil



suzy smith – gumball with prize
24x24 oil

PRINCIPLE GALLERY
C H A R L E S T O N

:: for further inquiries – feel free to contact Principle Gallery:Charleston
or join us at the opening SEPT 5th 2014 ::

843.727.4500 / art@principlecharleston.com / 125 meeting st charleston sc 29401
www.principlegallery.com

Women Painting Women: Guest Juror Statement from Allison Malafronte

I'd like to thank Principle Gallery and Women Painting Women for selecting me as one of the jurors for this competition and the many artists who entered for allowing me to view your work. It was a pleasure to observe and study the more than 750 entries and an admitted challenge to narrow down so many interesting paintings into one cohesive whole.

The criteria I used to rank each piece was based on three main points. So many factors must be working in concert to make a painting compelling, but the first for me is accuracy and skill in the basics: drawing, composition, anatomy, values, perspective, color harmony, etc. The second is the choice of subject and how it is presented. Regardless of whether or not I personally identified with the subject or concept, did the artist make me curious and want to care about who was pictured? Could I see that she had something to say about this woman, that there was a personal connection or story there? The third factor that became important as I viewed the many entries was an element of originality and unpredictability. Yes, a pretty young woman sitting for a portrait with her hands folded in her lap gazing directly at the viewer can be lovely to look at. But how much more interesting and engaging for the audience is a woman in an environment that alludes to some of the struggles she may be dealing with in her life or that points in hope to the places she may go? There were many artists who worked with challenging allegorical, metaphorical, or mythological/Biblical themes, and I found several of these to be intriguing and thought provoking. And then there were others who had a very simple composition or concept but conveyed it with such sensitivity and beauty that it couldn't be ignored.

The final aspect that was considered is how the artist's style and approach fit into the larger context of the Women Painting Women philosophy. Since its inception in 2009, the original founding artists (Alia El-Bermani, Diane Fiessel, and Sadie Valeri) and those who have since joined the group -- either through invitation or association -- have placed a strong emphasis on figurative works that are skillfully done, thought provoking, and emotionally expressive. Many of the entries to this competition had one or more of the jurying and WPW criteria. Those that were scored highest had the majority of them.

In the spirit of the Women Painting Women founding mission, I hope this exhibition encourages women painters to continue challenging one another and actively seek opportunities to promote and showcase their work. Thank you again to all the painters who entered for sharing your art and heart with us, and thank you Principle Gallery and Women Painting Women for giving them the opportunity to do so.

~Allison Malafronte

A Statement from Principle Gallery

As a gallery, we have been honored to host the original Women Painting Women show for multiple years. Within that time, we have had the pleasure to create both personal and professional relationships with each artist who has contributed. The Women Painting Women movement is in our hearts and on our walls- and we feel very strongly about spreading the contemporary feminine perspective by introducing new artists to the WPW family each year.

Now... How do we do that? We asked an experienced professional with multiple years both the editorial and the private sector to join us in a blind jury for this, the Women Painting Women 5th Anniversary + International Juried Show. As such, our deepest and sincerest thanks for the thoughtful adjudication by Allison Malafronte.

In rounding out the jury, we tried our best to balance:

- The objective of the WPW movement to showcase female painters portraying women actively engaging in their world.

We were recently quoted as saying: 'As with past WPW shows, we encourage narrative + conceptual work, along with extraordinary portraiture to present every facet of the female experience as artists, daughters, sisters, mothers, lovers. Paint your stories. We (your viewer) want to see who you are in what you paint!'

- The objective of the gallery. i.e. The introduction of exciting new work to a broad audience.
- Personal taste. Naturally, this comes into play- which is why we had three jurors of different experiences in the Art World. In retrospect, our individual choices complimented each other more often than not.

We hope you join us in creating a dynamic show that actively engages the viewer- to know more about the women in the painting, as well as the talented women that are brave enough to put their brushes to palettes in order to create resonate works about the world we share.

ENJOY!

~ Michele Ward (owner) and Carri Schwab (director)